

Fulcrum for the Future
Girls' Education and Voluntary Family Planning:
The Best Investments for
Development and Security in the Sahel

Brooke Russell

July 27, 2021

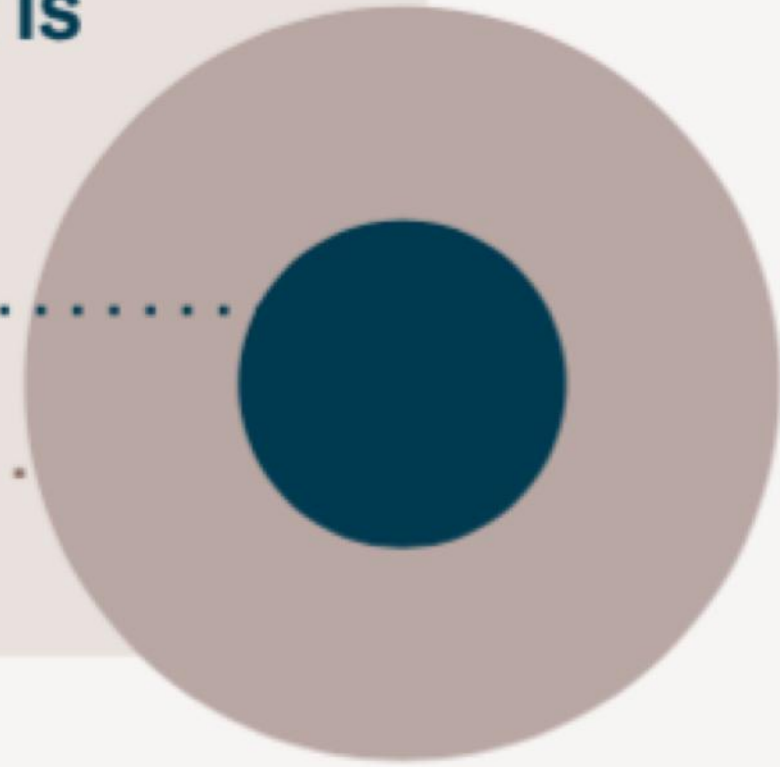
OASIS

FIGURE 1: 2050 SAHEL POPULATION PROJECTION

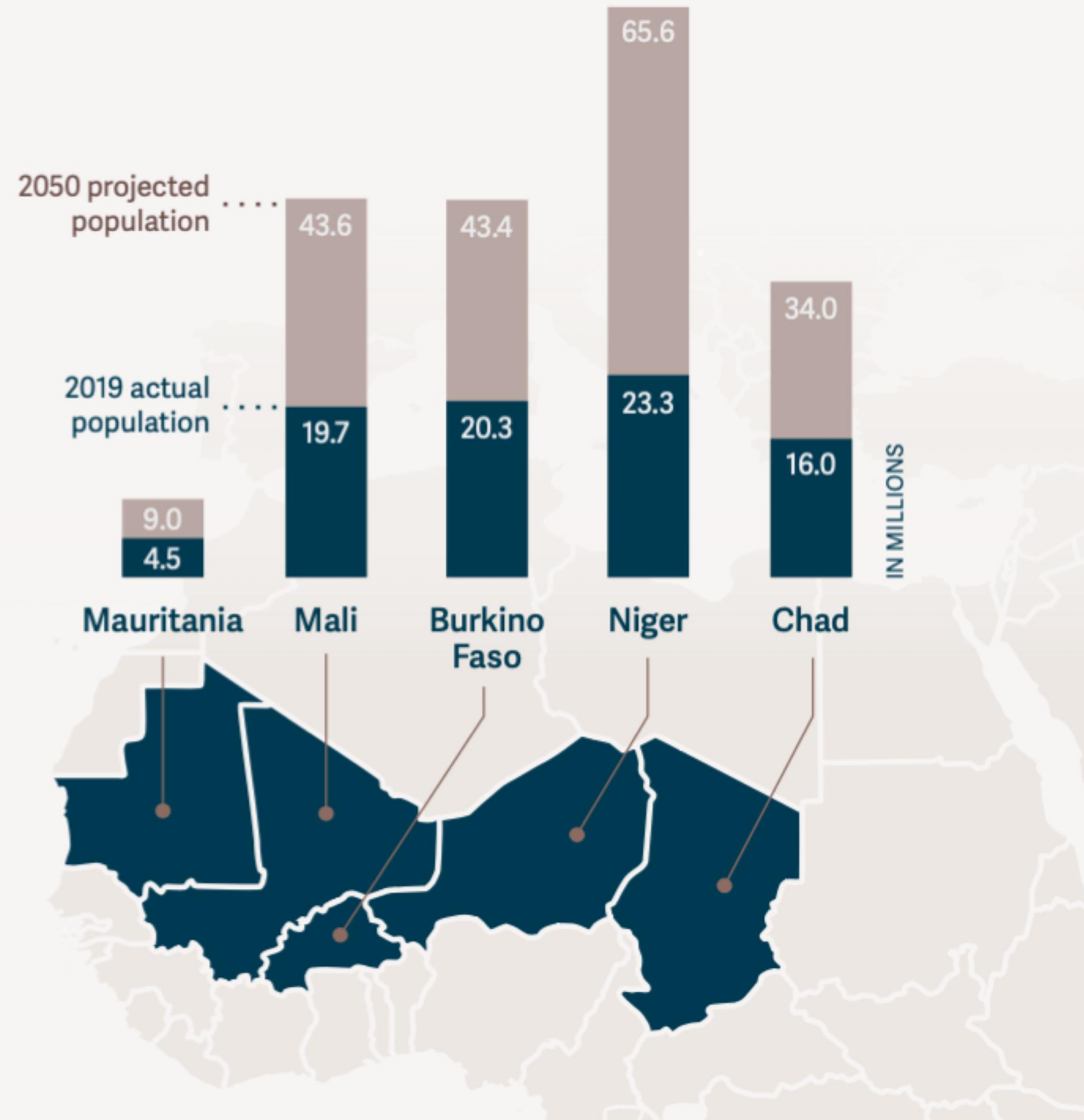
The population of the G5 Sahel region is expected to more than double from

85 million

to nearly 200 million.















If the Sahel's population grows as projected, maintaining its current per capita GDP would require **11%** annual GDP growth.



SOURCE: UN World Population Prospects 2019.

TABLE 1: DEMOGRAPHIC, HEALTH AND EDUCATION INDICATORS

	 Mauritania	 Mali	 Burkino Faso	 Niger	 Chad	 Sub-Saharan Africa
 Women of reproductive age (in thousands)	1,138	4,541	4,891	5,097	3,739	262,960
 Women using modern contraception	5%	10%	16%	14%	6%	25%
 Total fertility rate	4.5	6.1	6.0	7.6	6.4	4.7
 Women with an unmet need for contraception	32%	25%	26%	21%	24%	26%
 Girls' primary school completion rate	80%	47%	68%	57%	34%	67%
 Girls' lower secondary school completion rate	45%	27%	44%	16%	10%	42%

SOURCE: DHS, FP2020, World Bank Indicators, and UN World Population Prospects 2019

**What type & level of
funding would create
transformational change
in the Sahel?**

Key Finding

Family planning and education are the critical areas for impactful investment.



Educate and empower adolescent girls



Expand access to voluntary family planning

Mutually-reinforcing benefits:

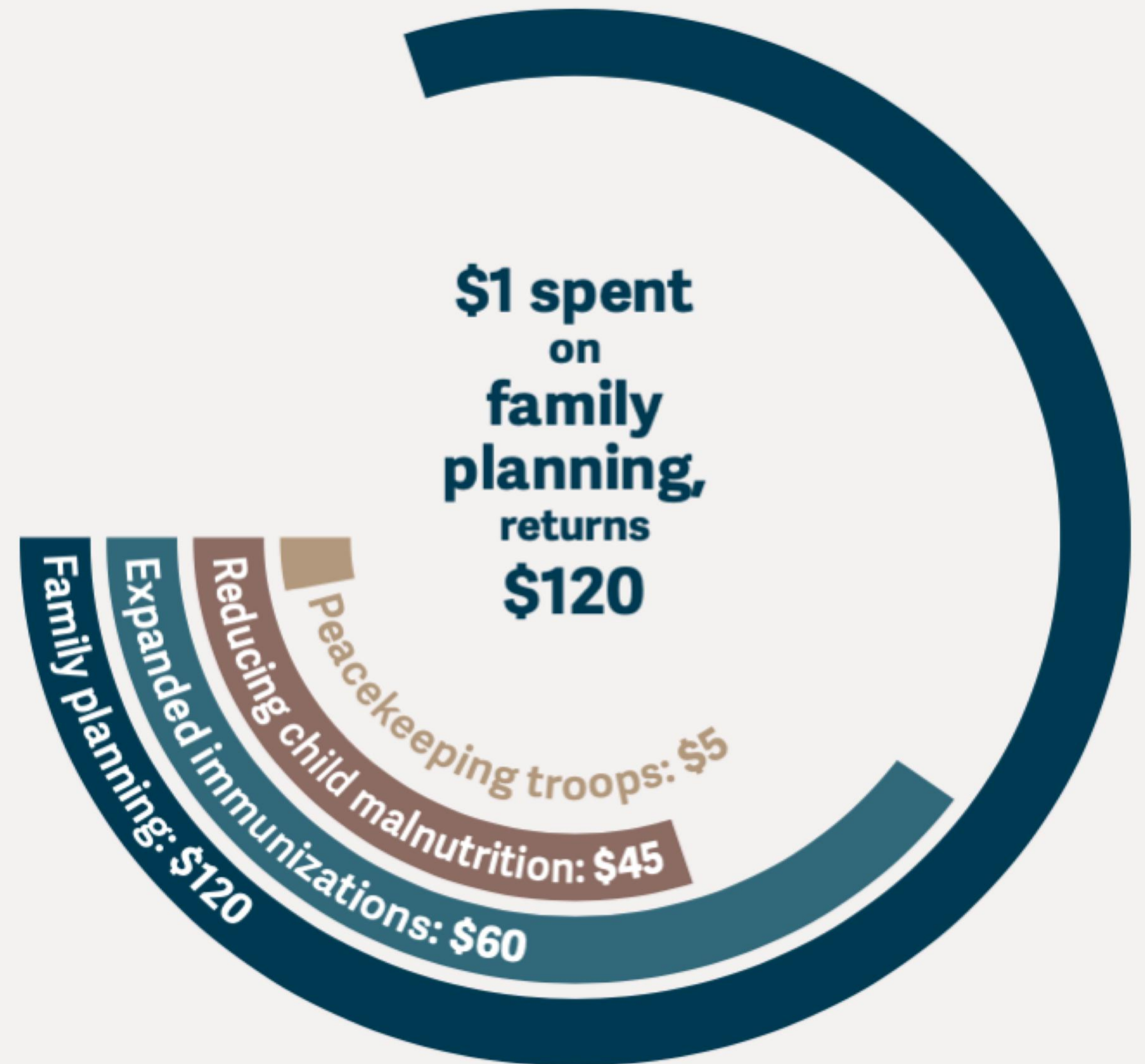
- Health benefits grow
- Economic growth & productivity soar
- Labor market participation & earnings rise
- Education levels increase, even across generations
- Family size reduces
- Resilience increases
- Stability & peace improve
- Social programs savings expand

Together, these investments enable the women of the region to voluntarily lay the groundwork for a demographic dividend to the benefit of all the Sahel.

Key Finding

Family planning and education are the critical areas for impactful investment.

FIGURE 3: BENEFITS PER DOLLAR SPENT FOR VARIOUS DEVELOPMENT TARGETS.



SOURCE: Copenhagen Consensus Centre

Methodology

Estimating what full funding means for education & family planning



Educate and empower adolescent girls

2015 UNESCO *Education for All Global Monitoring Report*.

Universal education will cost 6.3% of GDP for each country.

-3.9% of GDP from domestic resources

-2.4% of GDP from international donors



Expand access to voluntary family planning

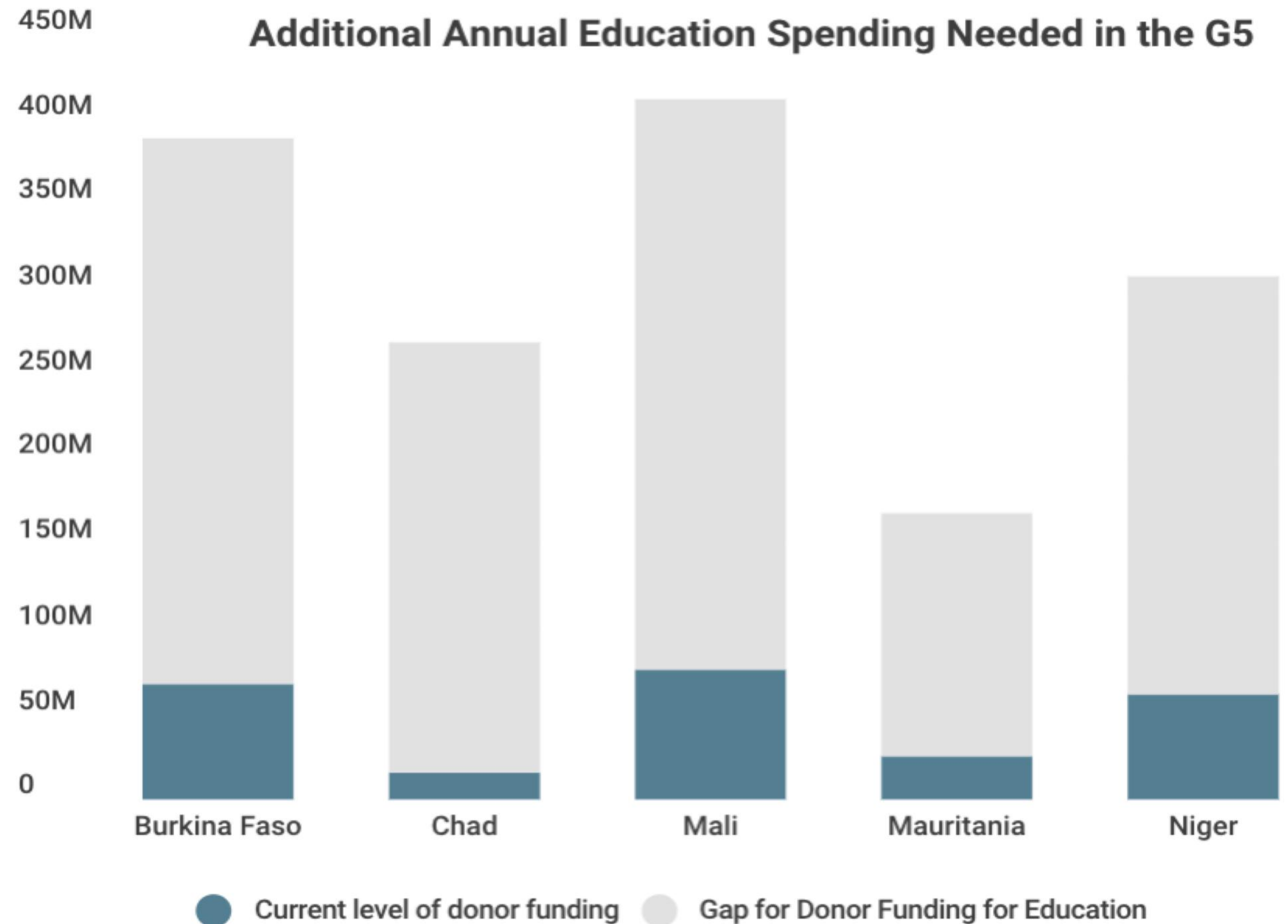
2019 Guttmacher Institute Report, *Adding It Up: Investing in Sexual and Reproductive Health*

Bringing unmet need for modern contraceptives down to 0 will cost \$29.40 per contraceptive user in the Africa Renewal Sahel target countries

Key Finding: Education

Full funding for education (from donors) is ~\$1.5 billion/year

An additional \$1.2 billion/year is needed

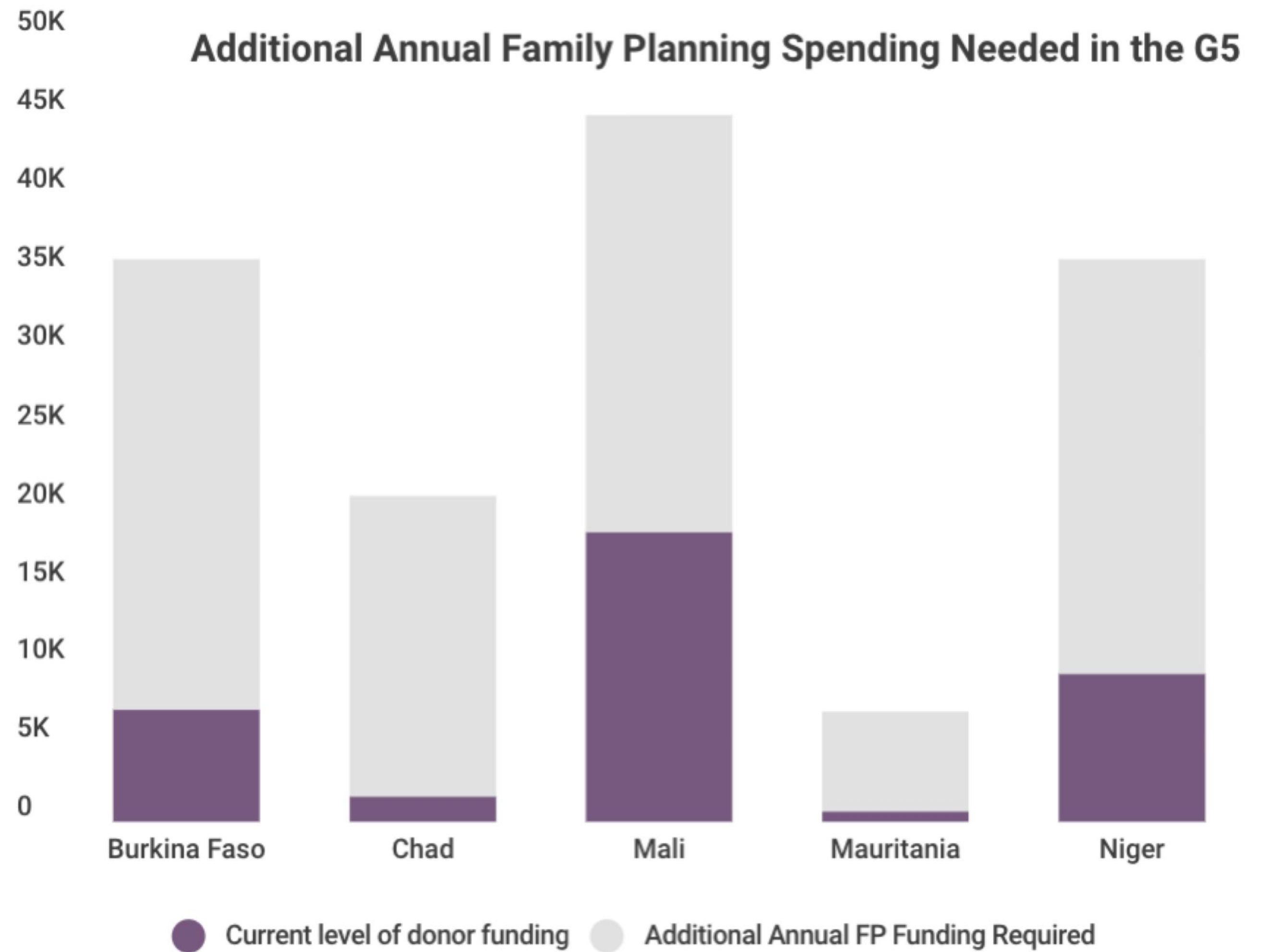


The education sector is only 16% funded currently.

Key Finding: Family Planning

Full funding for family planning is ~144 million/year

An additional \$107 million/year is needed



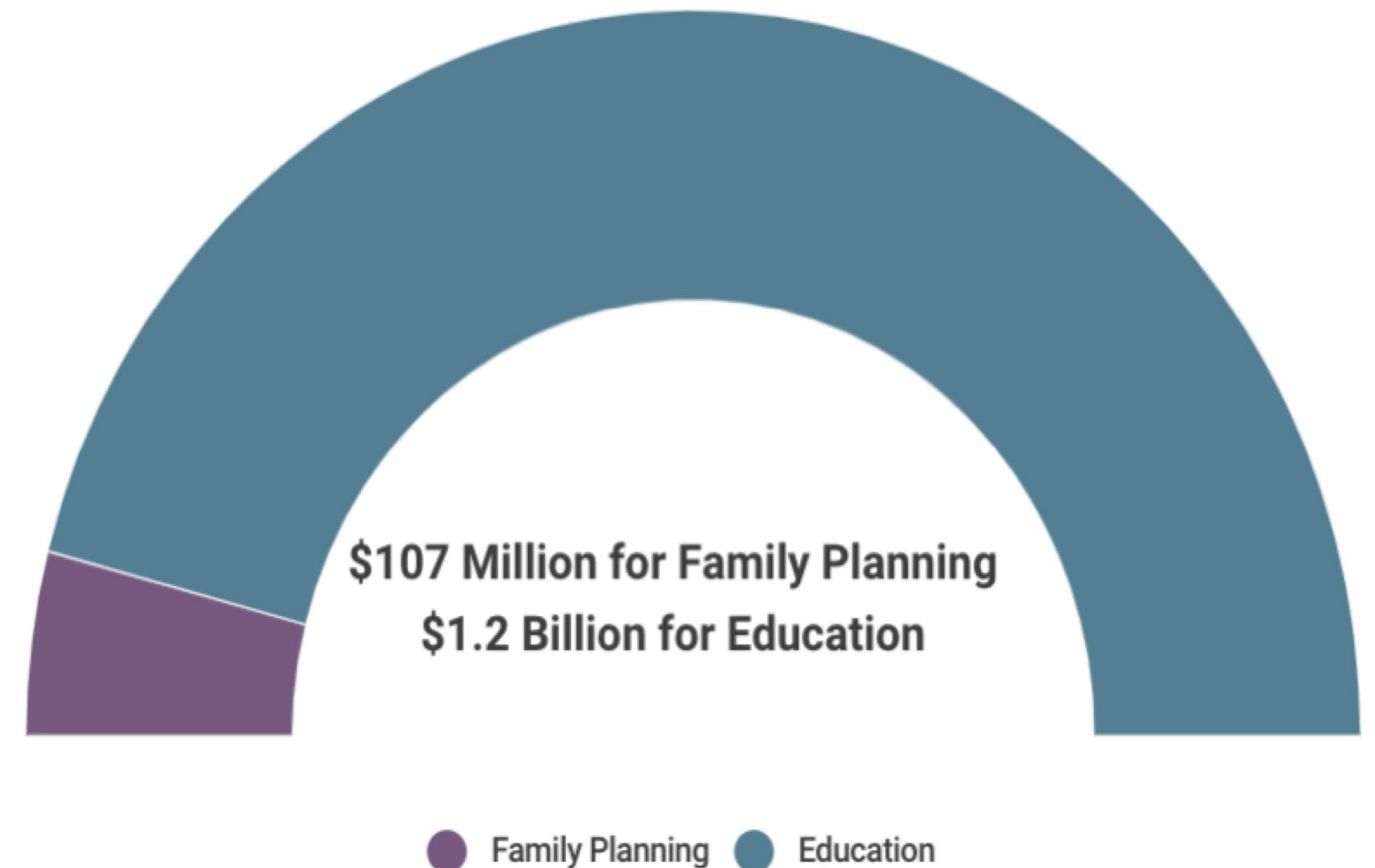
The family planning sector is only 26% funded currently.

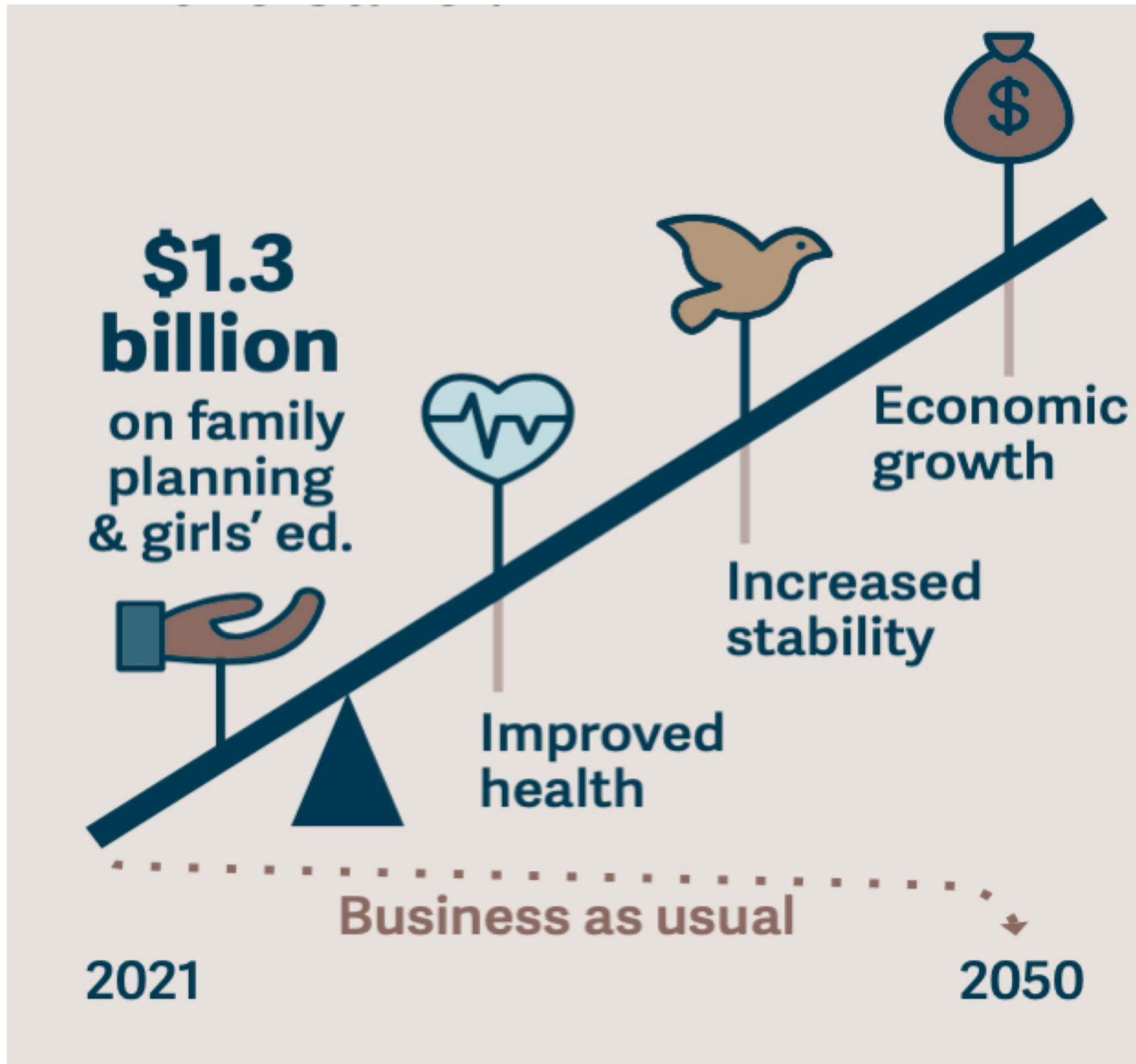
Key Finding: Transformational Funding in the Sahel

For 1.3 billion dollars we could close the family planning and education gaps in all G5 countries.

*That is half a billion dollars less than what was pledged for humanitarian response in just 3 countries at the 2020 UN Central Sahel Summit.

Transformational Funding for the Sahel





Fulcrum

Proper application of funding and support now can leverage the Sahel onto a new path